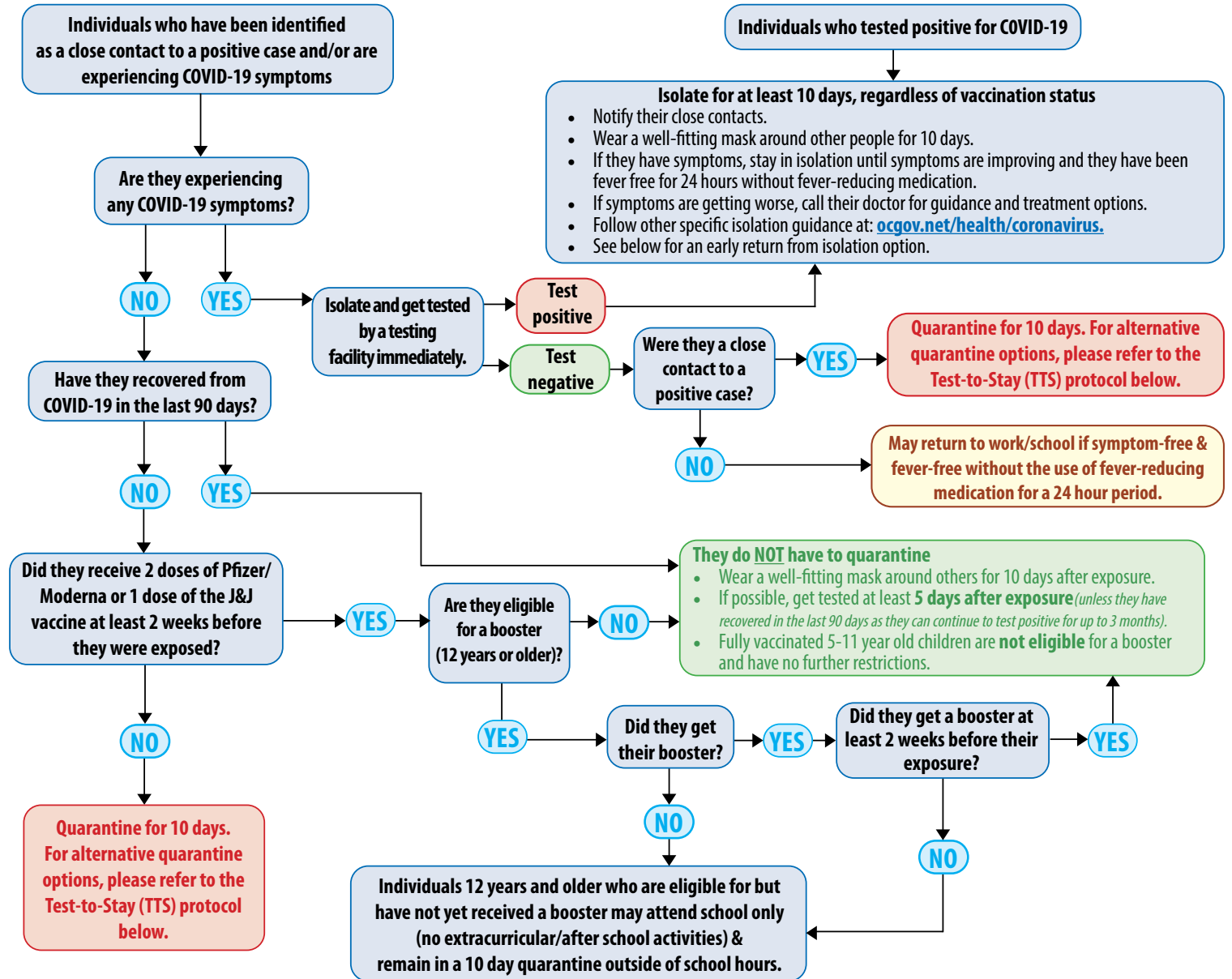




COVID-19 QUARANTINE & ISOLATION STUDENTS AND STAFF

For an interactive version for this guide, please visit www.wboro.org/covidguide



TEST-TO-STAY (TTS)

- Allows students and school personnel to attend school in-person during the quarantine period so long as certain conditions are met. For complete information please refer to **Section 2, Part 15** at www.wboro.org/reopeningplan.
- Individuals that have been identified as a close contact and are asymptomatic will qualify for this protocol unless the exposure occurred during high-risk sports.

EARLY RETURN FROM ISOLATION

- Standard isolation period remains at 10 days. An individual may shorten their isolation period if they test negative on day 5 or after and are symptom-free and fever-free without the use of fever-reducing medication for at least 24 hours prior to returning.
- A rapid antigen test is required. If a home test is utilized, it must be administered prior to boarding the school bus (or arriving at school) and be negative. A negative result must be communicated to the nurse prior to the student arriving at school. A second test to confirm the negative result will be administered at school in the nurse's office. If an individual tests positive on either test, they must remain at home or return home.
- If test results are obtained from an outside source, the documented negative results must be submitted to the school prior to consideration for reentry.
- If an individual or parent declines to participate in this protocol, the isolation period will remain at 10 days.

DEFINITIONS AND NOTES

- For detailed guidance, please review our Reopening Plan at www.wboro.org/reopeningplan.
- A close contact is someone who was less than 6 feet away from an infected person for a cumulative total of 15-minutes or more over a 24-hour period. For example, this would include three individual 5-minute exposures for a total of 15-minutes. In K-12 schools this excludes individuals who were between 3 to 6 feet with proper mask wearing.
- Following an exposure, monitor for symptoms for 10 days. If symptomatic, get tested immediately and isolate until they receive their test results. If they test positive/if testing isn't done, follow isolation recommendations.
- After a positive test or exposure, wear a well-fitting mask around other people at home and in public for 10 days.
- COVID-19 booster eligibility information can be found at www.cdc.gov/coronavirus/2019-ncov/vaccines/booster-shot.html.

Version: 01/31/2022