



Whitesboro

"Home of the Warriors"

Capital Project 2014

Central School District Newsletter

Capital Project 2014

Superintendent's Message

The Board of Education seriously considers all of their decisions and how they impact our students and community. Decisions such as the capital project are deemed necessary to preserve the integrity of our facilities, the health and safety aspects of our school environment, and the delivery of programs to our students.

The Business First Publication has continued to rank Whitesboro as one of the most financially efficient and economically effective school districts of the approximately 450 school districts in upstate New York.

Why a Capital Project?

- Beginning in 2005, per State Education Department regulations, all school districts must hire independent inspectors to conduct a Buildings Condition Survey (BCS) on all facilities every 5 years.
- The last Capital Project vote was April 2009.
- Based on our 2010 BCS results, many areas of our physical plant need to be replaced or are in need of repairs.
- Capital Project state aid for Whitesboro CSD is approximately 82%.
- Voter approval is required for the district to access this money.
- If the project does not pass, much of the work will have to be done within the regular school budget, which will cost more in the end.

**Voter Registration:
December 8, 2014, from 4-8 p.m.**

If you have not voted in a school budget or election in the last four years and are not registered with the county, you must preregister to be able to vote. Voter registration will be held on December 8, 2014, from 4:00 p.m. until 8:00 p.m. at **Parkway Middle School**, Oriskany Boulevard, Whitesboro; **Marcy Elementary School**, Maynard Drive, Marcy; **Deerfield Elementary School**, Schoolhouse Road, Deerfield.

Capital Project Vote and Polling Sites

December 15, 2014

**7 a.m. to 9 p.m.
Parkway, Marcy &
Deerfield Schools**

VOTE!

Public Informational Meeting

A Public Hearing will be held on Tuesday, December 2, 2014 at 7 p.m.

The meeting will be held in the Board of Education Room in the Parkway School.



Electronic sign at MS



Electronic sign at HS



Students using a computer lab.



Students using iPads.

Projected Timeline

December 15, 2014: Capital Project Vote

December 16, 2014 - February 15, 2015: Design Phase

February 15, 2015 - May 1, 2015: SED Review

May 1, 2015 - May 31, 2015: Bid Process

June 2015: Bid Opening and BOE Approval

July 2015 - September 2017: Project Work

The Project at a Glance

Whitesboro High School:

- Asbestos abatement and floor replacement
- Computer networking upgrades
- Corridor ceiling replacements
- Courtyard reconstruction
- Electronic sign at main entrance
- Elevator upgrades
- Exterior door replacements
- Improved heating in various areas throughout building
- New student lockers
- Projector and sound board replacement in auditorium
- Roof replacement
- Security camera improvements
- Sidewalk, pavement, and concrete curb replacement
- Student restroom upgrades including handicap accessibility improvements
- Turf field at the Wadas Complex
- Upgrade of kitchen

Middle School Campus:

- Auditorium air conditioning installation
- Computer networking upgrades
- Corridor ceiling replacements
- Electronic sign in front of school
- Elevator upgrades
- Exterior door replacements
- Handicapped lift replacement
- Improved heating in locker rooms
- Masonry wall and roof repair work
- New student lockers
- Press box remodel at Chiz Frye Field
- Projector and stage lighting in auditorium
- Roof replacement in select areas
- Security camera improvements
- Sidewalk, pavement, and concrete curb replacement
- Student restroom upgrades including handicap accessibility improvements

Deerfield Elementary:

- Asbestos abatement and floor replacement
- Computer networking upgrades
- Corridor ceiling replacements
- Replace grease trap in kitchen
- Roof replacement
- Security camera installation
- Sidewalk, pavement, and concrete curb replacement
- Student restroom upgrades including handicap accessibility improvements

Harts Hill Elementary:

- Computer networking upgrades
- Corridor ceiling replacements
- Exterior door replacements
- Kindergarten student restroom construction
- Remove grease trap in kitchen
- Roof replacement
- Security camera installation
- Sidewalk, pavement, and concrete curb replacement
- Student restroom upgrades including handicap accessibility improvements

Marcy Elementary:

- Asbestos abatement and floor replacement
- Computer networking upgrades
- Exterior door replacements
- Improve heat and insulation in corridor to schoolhouse
- Playground surface replacement
- Replace grease trap in kitchen
- Replace wall covering in cafeteria
- Roof replacement
- Security camera installation
- Sidewalk, pavement, and concrete curb replacement
- Student restroom upgrades including handicap accessibility improvements

Westmoreland Road Elementary:

- Asbestos abatement and floor replacement
- Computer networking upgrades
- Corridor ceiling replacements
- Library carpet replacement
- Replace grease trap in kitchen
- Roof replacement
- Security camera installation
- Sidewalk, pavement, and concrete curb replacement
- Student restroom upgrades including handicap accessibility improvements
- Window repairs

Maintenance Garage:

- Oil/Water separator
- Pole barn construction

Transportation Garage:

- Building and safety upgrades
- Bus lift replacement
- Restroom upgrades including handicap accessibility improvements
- Soil evaluation and remediation

Financial Impact

Total Cost of Project:

\$30,678,027

State Building Aid:

82%

Tax Levy Impact 2016-17:

2.13%

Average Cost Per Household

| Home with Full Value Exemption | Senior Enhanced STAR \$45,580 Exemption* <i>*Income Restrictions</i> | With Basic STAR* \$21,300 Exemption | No STAR No Exemption |
|--------------------------------|--|--|-------------------------------------|
| Assessed Value | Estimated Increase Cost per Year | Estimated Increase Cost per Year | Estimated Increase Cost per Year |
| 50,000 | 2.09 | 13.59 | 23.67 |
| 75,000 | 13.93 | 25.42 | 35.50 |
| 100,000 | 25.76 | 37.25 | 47.34 |
| 125,000 | 37.60 | 49.09 | 59.17 |
| 150,000 | 49.43 | 60.92 | 71.01 |
| 175,000 | 61.26 | 72.76 | 82.84 |
| 200,000 | 73.10 | 84.59 | 94.67 |
| 225,000 | 84.93 | 96.43 | 106.51 |

****STAR Savings may be limited by the MAXIMUM STAR Savings***



Westmoreland Road Elementary Roof



Westmoreland Road Elementary Ceiling Tiles

Project Highlights

- Approximately 25% of the capital project is associated with new roofs on the four elementary schools and additional roof work at the High School and Middle School.
- Technology upgrades will greatly increase the network capacity in the District, enabling the use of wireless devices in all instructional spaces, and the addition of security cameras at all buildings.
- The turf at Wadas field will serve boys' and girls' soccer, boys' and girls' lacrosse, field hockey, and practices for many sports throughout the year.
- Many facilities in our district will receive enhancements for handicapped accessibility compliance.
- The financial implications of the capital project are worst case scenario estimates.

Voter Eligibility Requirements

A voter must meet the following eligibility requirements to vote in school elections:

To Vote You Must Be:

- A citizen of the United States.
- A resident of the school district for a minimum of 30 days prior to the vote, including those who rent. Section 2018-C of the Education Law may require all persons who vote to provide one form of identification or proof of residency.
- At least 18 years of age.

Absentee Ballots

Applications for absentee ballots for the December 15 capital project vote may be applied for at the office of the School District Clerk, 65 Oriskany Blvd., Whitesboro, NY, from 8:00 a.m. to 4:00 p.m., or by calling 266.3301.

Applications must be received by the district clerk at least seven days before the vote if the ballot is to be mailed to the voter, or the day before the vote if the ballot is to be issued to the voter in person.



MS Doors



MS Sidewalk

Capital Project



HS Doors



HS Auditorium Entrance



HS Door Frames



HS Sidewalk



HS Sidewalk



HS Courtyard



HS Lockers



HS Turf Field Example



Wadas Field

The New York State Public High School Athletic Association recognizes varsity teams each year with the New York State Scholar Athlete Award.

Criteria for the award:

- Team competes at the varsity level
- Minimum team grade average is 90%
- There are a minimum number of students for each athletic team eligible for the team to eligible

In the 2013-2014 school year, 25 of the 26 varsity teams in Whitesboro were honored with this award.

The fall season has recently concluded, and we are expecting most of the teams to once again qualify for this honor.

Capital Project



MS Lockers



MS Bathroom



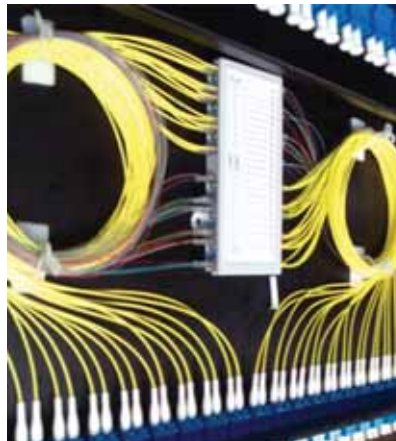
Deerfield Curb



Antiquated network infrastructure at Deerfield Elem.



Antiquated network infrastructure at Westmoreland Rd.



Example of modern fiber-optic cabling



Example of modern network racks



Example of modern network cabling



Wireless Access Point (one recommended per instructional space for student access)



30-unit Laptop Cart



Security Cameras

WHITESBORO CENTRAL SCHOOL DISTRICT

65 Oriskany Boulevard
Whitesboro, New York 13492

Superintendent of Schools

Dave Langone

Whitesboro Board of Education

Thomas Schoen Jr., President
Michael Head, Vice President

Board Members

Edward Blake
Steven Farr
Michael Geller
John Harmon Jr.
Brian McQueen

Non-Profit Organization
U.S. Postage
PAID
Whitesboro, New York
Permit No. 18

Postal Patron Local

The Whitesboro Central School Board of Education typically meets at 7:00 p.m. on the first and third Tuesday of each month during the school year, and once each month in December, July and August. Please refer to our website at www.wboro.org for updated information regarding the Board of Education meeting schedule.

If you have any questions regarding the upcoming capital project, please submit them by email to:

capitalproject@wboro.org